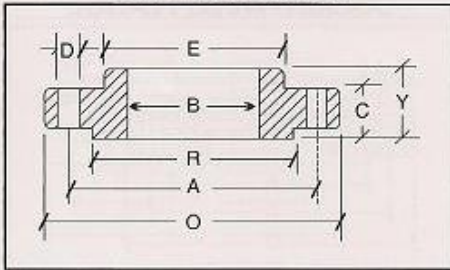
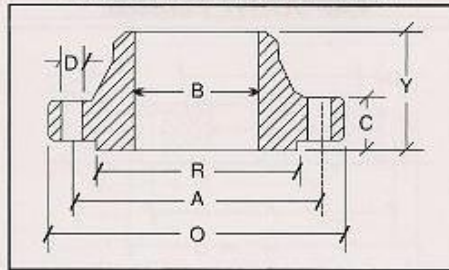


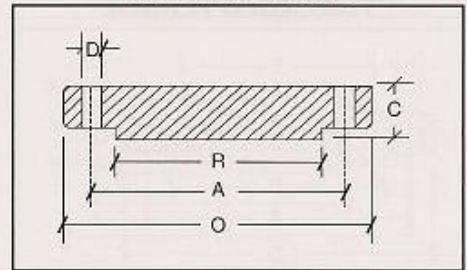
SLIP-ON FLANGE



WELDING NECK FLANGE



BLIND FLANGE



DIMENSIONS OF CLASS 150 FLANGES AS PER ANSI B 16.5

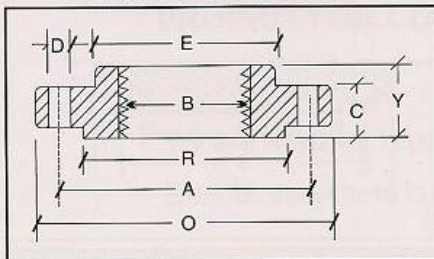
Nominal Pipe Size	Flange Dia O	Dia of Bolt Circle A	Dia of Bolt Holes D	No. of Holes	Thk of Flange C	Dia of Hub E	Length through Hub			Dia of Bore		Dia of Hub R	Depth of Socket R
							S/O & SW	W/N	L/J	S/O & SW	L/J		
							Y	Y	Y	B	B		
15	88.9	60.3	15.9	4	11.1	30.2	15.9	47.6	15.9	22.3	22.9	34.9	9.5
20	98.4	69.8	15.9	4	12.7	38.1	15.9	52.4	15.9	27.7	28.2	42.9	11.1
25	107.9	79.4	15.9	4	14.3	49.2	17.5	55.6	17.5	34.5	35.0	50.8	12.7
32	117.5	88.9	15.9	4	15.9	58.7	20.6	57.1	20.6	43.2	43.7	63.5	14.3
40	127.0	98.4	15.9	4	17.5	65.1	22.2	61.9	22.2	49.5	50.0	73.0	15.9
50	152.4	120.6	19.0	4	19.0	77.8	25.4	63.5	25.4	62.0	62.5	92.1	17.5
65	177.8	139.7	19.0	4	22.2	90.5	28.6	69.8	28.6	74.7	75.4	104.8	19.0
80	190.5	152.4	19.0	4	23.8	107.9	30.2	69.8	30.2	90.7	91.4	127.0	20.6
100	228.6	190.5	19.0	8	23.8	134.9	33.3	76.2	33.3	116.1	116.8	157.2	23.8
125	254.0	215.9	22.2	8	23.8	163.5	36.5	88.9	36.5	143.8	144.5	185.7	23.8
150	279.4	241.3	22.2	8	25.4	192.1	39.7	88.9	39.7	170.7	171.4	215.9	27.0
200	342.9	298.4	22.2	8	28.6	246.1	44.4	101.6	44.4	221.5	222.2	269.9	31.7
250	406.4	361.9	25.4	12	30.2	304.8	49.2	101.6	49.2	276.3	277.4	323.8	33.3
300	482.6	431.8	25.4	12	31.8	365.1	55.6	114.3	55.6	327.1	328.2	381.0	39.7
350	533.4	476.2	28.6	12	34.9	400.0	57.1	127.0	79.4	359.1	360.2	412.7	41.3
400	596.9	539.7	28.6	16	36.5	457.2	63.5	127.0	87.3	410.5	411.2	469.9	44.4
450	635.0	577.8	31.7	16	39.7	504.8	68.3	139.7	96.8	461.8	462.3	533.4	49.2
500	698.5	635.0	31.7	20	42.9	558.8	73.0	144.5	103.2	513.1	514.3	584.2	54.0
600	812.8	749.3	34.9	20	47.6	663.6	82.5	152.4	111.1	615.9	615.9	692.1	63.5

DIMENSIONS OF CLASS 300 FLANGES AS PER ANSI B 16.5

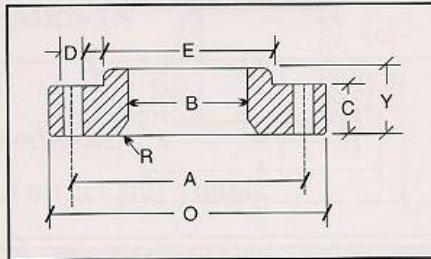
Nominal Pipe Size	Flange Dia O	Dia of Bolt Circle A	Dia of Bolt Holes D	No. of Holes	Thk of Flange C	Dia of Hub E	Length through Hub			Dia of Bore		Dia of Hub R	Depth of Socket R
							S/O & SW	W/N	L/J	S/O & SW	L/J		
							Y	Y	Y	B	B		
15	95.2	66.7	15.9	4	14.3	38.1	22.2	52.4	22.2	22.3	22.9	34.9	9.5
20	117.5	82.5	19.0	4	15.9	47.6	25.4	57.1	25.4	27.7	28.2	42.9	11.1
25	123.8	88.9	19.0	4	17.5	54.0	27.0	61.9	27.0	34.5	35.0	50.8	12.7
32	133.3	98.4	19.0	4	19.0	63.5	27.0	65.1	27.0	43.2	43.7	63.5	14.3
40	155.6	114.3	22.2	4	20.6	69.8	30.2	68.3	30.2	49.5	50.0	73.0	15.9
50	165.1	127.0	19.0	8	22.2	84.1	33.3	69.8	33.3	62.0	62.5	92.1	17.5
65	190.5	149.2	22.2	8	25.4	100.0	38.1	76.2	38.1	74.7	75.4	104.8	19.0
80	209.5	168.3	22.2	8	28.6	117.5	42.9	79.4	42.9	90.7	91.4	127.0	20.6
100	254.0	200.0	22.2	8	31.8	146.0	47.6	85.7	47.6	116.1	116.8	157.2	23.8
125	279.4	234.9	22.2	8	34.9	177.8	50.8	98.4	50.8	143.8	144.5	185.7	-
150	317.5	269.9	22.2	12	36.5	206.4	52.4	98.4	52.4	170.7	171.4	215.9	-
200	381.0	330.2	25.4	12	41.3	260.3	61.9	111.1	61.9	221.5	222.2	269.9	-
250	444.5	387.3	28.6	16	47.6	320.7	66.7	117.5	95.2	276.3	277.4	323.8	-
300	520.7	450.8	31.7	16	50.8	374.6	73.0	130.2	101.6	327.1	328.2	381.0	-
350	584.2	514.3	31.7	20	54.0	425.4	76.2	142.9	111.1	359.1	360.2	412.7	-
400	647.7	571.5	34.9	20	57.2	482.6	82.5	146.0	120.6	410.5	411.2	469.9	-
450	711.2	628.5	34.9	24	60.3	533.4	88.9	158.7	130.2	461.8	462.3	533.4	-
500	774.7	685.8	34.9	24	63.5	587.4	95.2	161.9	139.7	513.1	514.3	584.2	-
600	914.4	812.8	41.3	24	69.8	701.7	106.4	168.3	152.4	615.9	615.9	692.1	-

- 1) All dimensions are in Millimeters.
- 2) Flanges except Lap Joint will be furnished with (1.6) Raised Face, which is included in "Thickness (C)" and "Length through Hub (Y)".

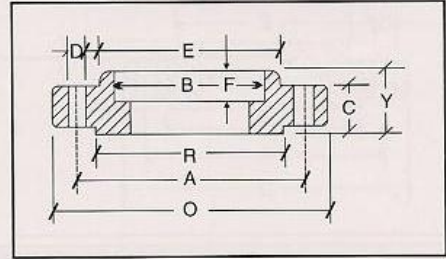
THREADED FLANGE



LAP JOINT FLANGE



SOCKET-WELD FLANGE



DIMENSIONS OF CLASS 600 FLANGES AS PER ANSI B 16.5

Nominal Pipe Size	Flange Dia O	Dia of Bolt Circle A	Dia of Bolt Holes D	No. of Holes	Thk of Flange C	Dia of Hub E	Length through Hub			Dia of Bore		Dia of Hub R	Depth of Socket R
							S/O & SW Y	W/N Y	L/J Y	S/O & SW B	L/J B		
							Y	Y	Y	B	B		
15	95.2	66.7	15.9	4	14.3	38.1	22.2	52.4	22.3	22.8	34.9	9.5	
20	117.5	82.5	19.0	4	15.9	47.6	25.4	57.1	25.4	27.7	42.9	11.1	
25	123.8	88.9	19.0	4	17.5	54.0	27.0	61.9	26.9	34.5	50.8	12.7	
32	133.3	98.4	19.0	4	20.6	63.5	28.6	66.7	28.4	43.2	63.5	14.2	
40	155.6	114.3	22.2	4	22.2	69.8	31.7	69.8	31.7	49.5	73.0	15.8	
50	165.1	127.0	19.0	8	25.4	84.1	36.5	73.0	36.5	62.0	92.1	17.4	
65	190.5	149.2	22.2	8	28.6	100.0	41.3	79.4	41.1	74.7	104.8	19.0	
80	209.5	168.3	22.2	8	31.8	117.5	46.0	82.5	45.9	90.7	127.0	-	
100	273.0	215.9	25.4	8	38.1	152.4	54.0	101.6	53.8	116.1	157.2	-	
125	330.2	266.7	28.6	8	44.4	188.9	60.3	114.3	60.4	143.8	185.7	-	
150	355.6	292.1	28.6	12	47.6	222.2	66.7	117.5	66.5	170.7	215.9	-	
200	419.1	349.2	31.7	12	55.6	273.0	76.2	133.3	76.2	221.5	269.9	-	
250	508.0	431.8	34.9	16	63.5	342.9	85.7	152.4	111.2	276.3	323.8	-	
300	558.8	488.9	34.9	20	66.7	400.0	92.1	155.6	117.3	327.1	381.0	-	
350	603.2	527.0	38.1	20	69.9	431.8	93.7	165.1	127.0	359.1	412.7	-	
400	685.8	603.2	41.3	20	76.2	495.3	106.4	177.8	139.7	410.5	469.9	-	
450	742.9	654.0	44.4	20	82.6	546.1	117.5	184.1	152.4	461.8	533.4	-	
500	812.8	723.9	44.4	24	88.9	609.6	127.0	190.5	165.1	513.1	584.2	-	
600	939.8	838.2	50.8	24	101.6	717.5	139.7	203.2	184.1	615.9	692.1	-	

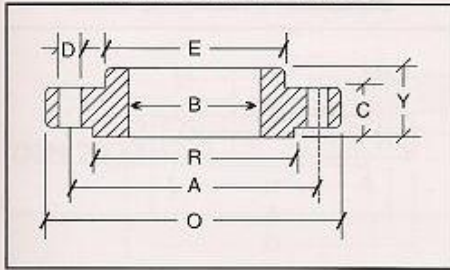
DIMENSIONS OF CLASS 900 FLANGES AS PER ANSI B 16.5

Nominal Pipe Size	Flange Dia O	Dia of Bolt Circle A	Dia of Bolt Holes D	No. of Holes	Thk of Flange C	Dia of Hub E	Length through Hub			Dia of Bore		Dia of Hub R	Depth of Socket R
							S/O & SW Y	W/N Y	L/J Y	S/O & SW B	L/J B		
							Y	Y	Y	B	B		
15	120.6	82.5	22.2	4	22.2	38.1	31.7	60.3	31.7	22.3	22.8	34.9	9.5
20	130.2	88.9	22.2	4	25.4	44.4	34.9	69.8	35.0	27.7	28.1	42.9	11.1
25	149.2	101.6	25.4	4	28.6	52.4	41.3	73.0	41.1	34.5	35.0	50.8	12.7
32	158.7	111.1	25.4	4	28.6	63.5	41.3	73.0	41.1	43.2	43.6	63.5	14.2
40	177.8	123.8	28.6	4	31.8	69.8	44.4	82.5	44.4	49.5	50.0	73.0	15.8
50	215.9	165.1	25.4	8	38.1	104.8	57.1	101.6	57.1	62.0	62.4	92.1	17.4
65	244.5	190.5	28.6	8	41.3	123.8	63.5	104.8	63.5	74.7	75.4	104.8	19.0
80	241.3	190.5	25.4	8	38.1	127.0	53.9	101.6	53.8	90.7	91.4	127.0	-
100	292.1	234.9	31.7	8	44.4	158.7	69.8	114.3	69.8	116.0	116.8	157.1	-
125	349.2	279.4	35.0	8	50.8	190.5	79.3	127.0	79.2	143.7	144.5	185.7	-
150	381.0	317.5	31.7	12	55.6	234.9	85.8	139.7	85.8	170.6	171.4	215.9	-
200	469.9	393.7	38.1	12	63.5	298.4	101.6	162.0	144.3	221.4	222.2	269.8	-
250	546.1	469.9	38.1	16	69.8	368.3	107.9	184.1	127.0	276.3	277.3	323.8	-
300	609.6	533.4	38.1	20	79.3	419.1	117.4	200.0	142.7	327.1	328.1	381.0	-

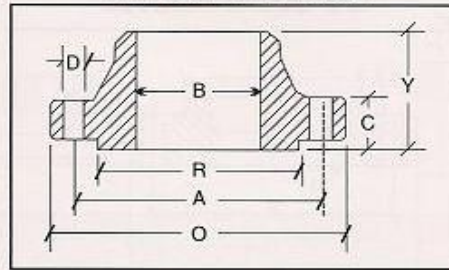
1) All dimensions are in Millimeters.

2) Flanges except Lap Joint will be furnished with (1.6) Raised Face, which is included in "Thickness (C)" and "Length through Hub (Y)".

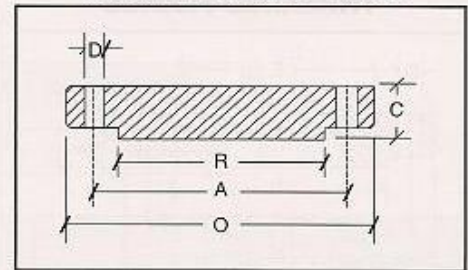
THREADED FLANGE



LAP JOINT FLANGE



SOCKET-WELD FLANGE



DIMENSIONS OF CLASS 1500 FLANGES AS PER ANSI B 16.5

Nominal Pipe Size	Flange Dia O	Dia of Bolt Circle A	Dia of Bolt Holes D	No. of Holes	Thk of Flange C	Dia of Hub E	Length through Hub			Dia of Bore		Dia of Hub R	Depth of Socket R
							S/O & SW	W/N	L/J	S/O & SW	L/J		
							Y	Y	Y	B	B		
15	120.6	82.5	22.2	4	22.2	38.1	31.7	60.3	31.7	22.3	22.8	34.9	9.5
20	130.2	88.9	22.2	4	25.4	44.4	34.9	69.8	34.9	27.7	28.1	42.9	11.1
25	149.2	101.6	25.4	4	28.6	52.4	41.3	73.0	41.3	34.5	35.0	50.8	12.7
32	158.7	111.1	25.4	4	28.6	63.5	41.3	73.0	41.3	43.2	43.6	63.5	14.2
40	177.8	123.8	28.6	4	31.8	69.8	44.4	82.5	44.4	49.5	50.0	73.0	15.8
50	215.9	165.1	25.4	8	38.1	104.8	57.1	101.6	57.1	62.0	62.0	92.1	17.4
65	244.5	190.5	28.6	8	41.3	123.8	63.5	104.8	63.5	74.7	75.4	104.8	19.0
80	266.7	203.2	31.7	8	47.6	133.3	73.0	117.5	73.0	90.7	91.4	127.0	-
100	311.1	241.3	34.9	8	54.0	161.9	90.5	123.0	90.4	116.1	116.8	157.2	-
125	374.6	292.1	41.3	8	73.0	196.8	104.8	155.6	104.8	143.8	144.5	185.7	-
150	393.7	317.5	38.1	12	82.6	228.6	119.1	171.4	119.1	170.7	171.4	215.9	-
200	482.6	393.7	44.4	12	92.1	292.1	142.9	212.7	142.8	221.5	222.2	269.9	-
250	584.2	482.6	50.8	12	107.9	368.3	158.7	254.0	177.8	276.3	277.3	323.8	-
300	673.1	571.5	54.0	16	123.8	450.8	181.0	282.5	218.9	327.1	328.1	381.0	-

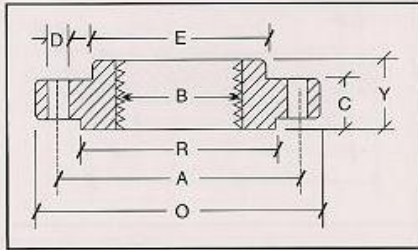
DIMENSIONS OF CLASS 2500 FLANGES AS PER ANSI B 16.5

Nominal Pipe Size	Flange Dia O	Dia of Bolt Circle A	Dia of Bolt Holes D	No. of Holes	Thk of Flange C	Dia of Hub E	Length through Hub			Dia of Bore		Dia of Hub R	Depth of Socket R
							S/O & SW	W/N	L/J	S/O & SW	L/J		
							Y	Y	Y	B	B		
15	133.3	88.9	22.2	4	30.2	42.9	39.7	73.0	39.7	22.3	22.3	34.9	-
20	139.7	95.2	22.2	4	31.7	50.8	42.9	79.4	42.9	27.7	27.7	42.9	-
25	158.7	107.9	25.4	4	34.9	57.1	47.7	88.9	47.7	34.5	34.5	50.8	-
32	184.1	130.2	28.6	4	38.1	73.0	52.4	95.2	52.4	43.2	43.2	63.5	-
40	203.2	146.0	31.7	4	44.4	79.4	60.3	111.1	60.3	49.5	49.5	73.0	-
50	234.9	171.4	28.6	8	50.8	95.2	69.8	127.0	69.8	62.4	62.0	92.1	-
65	266.7	196.8	31.7	8	57.1	114.3	79.4	142.9	79.4	74.7	74.7	104.8	-
80	304.8	228.6	34.9	8	66.7	133.3	92.1	168.3	92.1	90.7	90.7	127.0	-
100	355.6	273.0	41.3	8	76.2	165.1	107.9	190.5	107.9	116.1	116.1	157.2	-
125	419.1	323.8	47.6	8	92.1	203.2	130.0	228.6	130.0	143.8	143.8	185.7	-
150	482.6	368.3	54.0	8	107.9	234.9	152.4	273.0	152.4	170.7	170.7	215.9	-
200	552.4	438.1	54.0	12	127.0	304.8	177.8	317.5	177.8	221.5	221.5	269.9	-
250	673.1	539.7	66.7	12	165.1	374.6	228.6	419.1	228.6	276.3	276.3	323.8	-
300	762.0	619.1	73.0	12	184.1	441.3	254.0	463.5	254.0	327.1	327.1	381.0	-

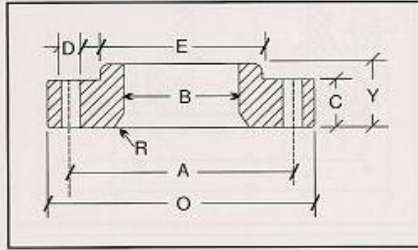
1) All dimensions are in Millimeters.

2) Flanges except Lap Joint will be furnished with (1.6) Raised Face, which is included in "Thickness (C)" and "Length through Hub (Y)".

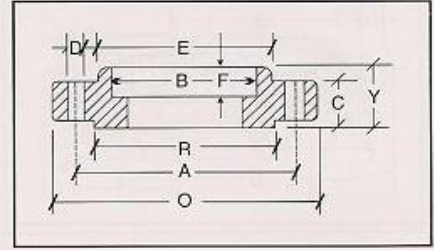
THREADED FLANGE



LAP JOINT FLANGE



SOCKET-WELD FLANGE

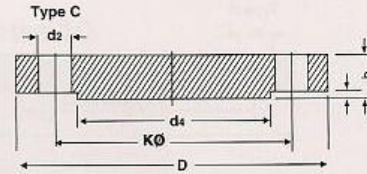
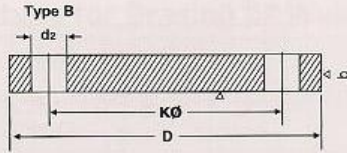


WELDING NECK FLANGE BORES (B)

Nominal Pipe Size	Outside Diam	Sch 20	Sch 30	Std. Wall	Sch 40	Extra Strong	Sch 80	Sch 120	Sch 160	Double Extra Strong
15	21.33	-	-	15.7	15.7	13.8	13.8	-	11.7	6.4
20	26.67	-	-	20.8	20.8	18.8	18.8	-	15.5	11.0
25	33.40	-	-	26.6	25.4	24.3	24.3	-	20.7	15.2
32	42.16	-	-	35.0	35.0	32.4	32.4	-	29.4	22.7
40	48.26	-	-	40.8	40.8	38.1	38.1	-	33.7	27.9
50	60.31	-	-	52.3	52.3	49.2	49.2	-	42.8	38.1
65	73.02	-	-	62.4	62.4	59.0	59.0	-	53.9	44.9
80	88.90	-	-	77.9	77.9	73.6	73.6	-	66.6	58.4
100	114.30	-	-	102.2	102.2	97.1	97.1	92.0	87.3	80.0
125	141.30	-	-	128.1	128.1	122.2	122.2	115.9	109.5	103.2
150	168.27	-	-	154.0	154.0	146.3	146.3	139.7	131.7	124.3
200	219.07	206.2	204.9	202.7	202.7	193.6	193.6	182.5	173.0	174.6
250	273.05	260.3	257.4	254.5	254.5	247.6	242.8	230.1	215.9	222.2
300	323.85	311.1	307.0	304.8	303.2	298.4	288.8	273.0	257.2	273.0
350	355.60	337.8	336.5	336.5	333.3	330.2	317.5	300.0	284.1	-
400	406.40	390.3	387.3	387.3	381.0	381.0	363.5	344.5	325.4	-
450	457.20	441.1	434.9	438.1	428.6	431.8	409.5	387.3	366.7	-
500	508.00	488.9	482.6	488.9	477.8	482.6	455.6	431.8	407.9	-
600	609.60	590.5	581.0	590.5	574.6	584.2	547.6	517.5	490.5	-

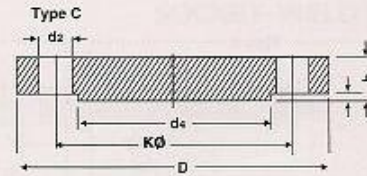
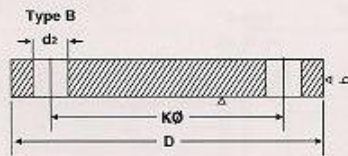
All dimensions are in Millimeters.

DIN 2527



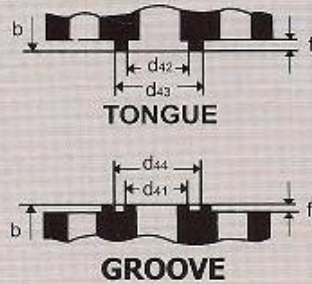
	NW	D	Flange		Raised face		No.	Bolts		Dia. of Bolt Hole d ₂	Weight of One Flange (7.85 kg/dm ³) Type-B Type-C	
			b	k	d ₄	f					kg	kg
ND-6	10	75	12	50	35	2	4	M 10	-	11.5	0.38	0.33
	15	80	12	55	40	2	4	M 10	-	11.5	0.44	0.38
	20	90	14	65	50	2	4	M 10	-	11.5	0.65	0.59
	25	100	14	75	60	2	4	M 10	-	11.5	0.82	0.74
	32	120	14	90	70	2	4	M 12	(1/2")	14	1.17	1.07
	40	130	14	100	80	3	4	M 12	(1/2")	14	1.39	1.21
	50	140	14	110	90	3	4	M 12	(1/2")	14	1.62	1.43
	65	160	14	130	110	3	4	M 12	(1/2")	14	2.44	2.21
	80	190	16	150	128	3	4	M 16	(5/8")	18	3.43	3.09
	100	210	16	170	148	3	4	M 16	(5/8")	18	4.76	4.37
	125	240	18	200	178	3	8	M 16	(5/8")	18	6.11	5.68
	150	265	18	225	202	3	8	M 16	(5/8")	18	7.51	7.02
	(175)	295	20	255	232	3	8	M 16	(5/8")	18	10.4	9.85
	200	320	20	280	258	3	8	M 16	(5/8")	18	12.3	11.7
	250	375	22	335	312	3	12	M 16	(5/8")	18	18.3	17.6
ND-10 Note from 10 mm to 175 mm see ND-16	300	440	22	395	365	4	12	M 20	(3/4")	23	25.3	24.0
	350	490	22	445	415	4	12	M 20	(3/4")	23	31.6	30.1
	400	540	22	495	465	4	16	M 20	(3/4")	23	38.4	36.4
	500	645	24	600	570	4	20	M 20	(3/4")	23	60.4	58.1
	200	340	24	295	268	3	8	M 20	(3/4")	23	16.5	15.8
ND-16 Note : For DIN 2527ND-10-4 Holes	250	395	26	350	320	3	12	M 20	(3/4")	23	24.0	23.1
	300	445	26	400	370	4	12	M 20	(3/4")	23	30.9	29.4
	350	505	26	460	430	4	16	M 20	(3/4")	23	40.6	38.0
	400	565	26	515	482	4	16	M 24	(7/8")	27	49.4	47.5
	500	670	28	620	585	4	20	M 24	(7/8")	27	75.0	72.7
	10	90	14	60	40	2	4	M 12	(1/2")	14	0.63	0.56
	15	95	14	65	45	2	4	M 12	(1/2")	14	0.72	0.64
	20	105	16	75	58	2	4	M 12	(1/2")	14	1.01	0.93
	25	115	16	85	68	2	4	M 12	(1/2")	14	1.23	1.13
	32	140	16	100	78	2	4	M 16	(5/8")	18	1.80	1.66
	40	150	6	110	88	3	4	M 16	(5/8")	18	2.09	1.85
	50	165	18	125	102	3	4	M 16	(5/8")	18	2.88	2.59
	65	185	18	145	122	3	4	M 16	(5/8")	18	3.66	3.33
	80	200	20	160	138	3	4/8	M 16	(5/8")	18	4.77	4.34
	100	220	20	180	158	3	8	M 16	(5/8")	18	5.65	5.26
	125	250	22	210	188	3	8	M 16	(5/8")	18	8.42	7.67
	150	285	22	240	212	3	8	M 20	(3/4")	23	10.4	9.85
	(175)	315	24	270	242	3	8	M 20	(3/4")	23	14.0	13.5
200	340	24	295	268	3	12	M 20	(3/4")	23	16.1	15.6	
250	405	26	355	320	3	12	M 24	(7/8")	27	24.9	23.9	
300	460	28	410	378	4	12	M 24	(7/8")	27	35.1	33.6	
350	520	30	470	438	4	16	M 24	(7/8")	27	47.8	46.2	
400	580	32	525	490	4	16	M 27	(1")	30	63.5	61.5	
500	715	34	650	610	4	20	M 30	(1 1/8")	33	102	99.5	

DIN 2527



	NW	D	Flange		Raised face		No.	Bolts		Dia. of Bolt Hole d ₂	Weight of One Flange (7.85 kg/dm ³)	
			b	k	d ₄	f		kg	kg			
ND-25 Note : From 10 mm to 150 mm see ND-40	(175)	330	28	280	248	3	12	M 24	(7/8")	27	17.3	16.5
	200	360	30	310	278	3	12	M 24	(7/8")	27	22.3	21.5
	250	425	32	370	335	3	12	M 27	(1")	30	33.5	32.5
	300	485	34	430	395	4	16	M 27	(1")	30	46.3	44.7
	350	555	38	490	450	4	16	M 30	(1 1/8")	33	68.0	65.9
	400	620	40	550	505	4	16	M 33	(1 1/4")	36	89.7	87.0
ND-40	500	730	44	660	615	4	20	M 33	(1 1/4")	36	138	134
	10	90	16	60	40	2	4	M 12	(1/2")	14	0.72	0.62
	15	95	16	65	45	2	4	M 12	(1/2")	14	0.81	0.74
	20	105	18	75	58	2	4	M 12	(1/2")	14	1.24	1.05
	25	115	18	85	68	2	4	M 12	(1/2")	14	1.38	1.31
	32	140	18	100	78	2	4	M 16	(5/8")	18	2.03	1.82
	40	150	18	110	88	3	4	M 16	(5/8")	18	2.35	2.11
	50	165	20	125	102	3	4	M 16	(5/8")	18	3.20	2.91
	65	185	22	145	122	3	8	M 16	(5/8")	18	4.29	4.13
	80	200	24	160	138	3	8	M 16	(5/8")	18	5.88	5.21
	100	236	24	190	162	3	8	M 12	(3/4")	23	7.54	7.08
	125	270	26	220	188	3	8	M 24	(7/8")	27	10.8	10.4
	150	300	28	250	218	3	8	M 24	(7/8")	27	14.5	13.9
	175	350	32	295	260	3	12	M 27	(1")	30	22.1	21.3
	200	375	34	320	285	3	12	M 27	(1")	30	27.2	26.2
	250	450	38	385	345	3	12	M 30	(1 1/8")	33	43.8	43.1
300	515	42	450	410	4	16	M 30	(1 1/8")	33	63.3	62.2	
350	580	46	510	465	4	16	M 33	(1 1/4")	36	89.5	87.2	
400	660	50	585	535	4	16	M 36	(1 3/8")	39	127	124	
500	755	52	670	615	4	20	M 39	(1 1/2")	42	172	168	

**FLANGE FACINGS
TONGUE AND GROOVE,
NOMINAL PRESSURE
10 TO 100 ACORDING
TO DIN 2512**

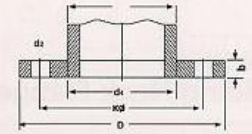


Nominal Pipe Size	Tongue						Nominal Pipe Size	Groove					
	d ₄₂ +0.5	d ₄₃ -0.5	f ₁ +0.5	d ₄₁ -0.5	d ₄₄ +0.5	f ₂ -0.5		d ₄₂ +0.5	d ₄₃ -0.5	f ₁ +0.5	d ₄₁ -0.5	d ₄₄ +0.5	f ₂ -0.5
10	24	34	4	23	35	3	175	213	233	4.5	212	234	3.5
15	29	39	4	28	40	3	200	239	259	4.5	238	260	3.5
20	36	50	4	35	51	3	250	292	312	4.5	291	313	3.5
25	47	57	4	42	58	3	300	343	363	4.5	342	364	3.5
32	51	65	4	50	66	3	350	395	421	5	394	422	4
40	61	75	4	60	76	3	400	447	473	5	446	474	4
50	73	87	4	72	88	3	500	549	575	5	548	576	4
65	95	109	4	94	110	3	600	649	675	5	648	676	4
80	106	120	4	105	121	3	700	751	777	5	750	778	4
100	129	149	4.5	128	150	3.5	800	856	882	5	855	883	4
125	155	175	4.5	154	176	3.5	900	961	987	5	960	988	4
150	183	203	4.5	182	204	3.5	1000	1061	1091	6	1060	1092	5

DIN 2576

Flanges, Slip-on type for Bracing or Welding nominal pressure 10

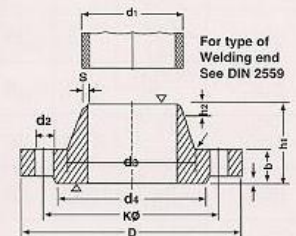
Pipe		Flange				Bolts			Weight of one flange 7.85 kg. /dm ³ kg
NW	d ₁	ds	D	b ₁	k	No.	D	d ₂	
10	14 17.2*)	14.5 17.7	90	14	60	4	M 12 (1/2")	14	0.613 0.605
15	20 21.3*)	20.5 21.8	95	14	65	4	M 12 (1/2")	14	0.675 0.669
20	25 26.9*)	25.5 27.4	105	16	75	4	M 12 (1/2")	14	0.947 0.936
25	30 33.7*)	30.5 34.2	115	16	85	4	M 12 (1/2")	14	1.14 1.11
32	38 42.4*)	38.5 42.9	140	16	100	4	M 16 (5/8")	18	1.66 1.62
40	44.5 48.3*)	45 48.8	150	16	110	4	M 16 (5/8")	18	1.89 1.86
50	57 60.3*)	57.5 60.8	165	18	125	4	M 16 (5/8")	18	2.51 2.47
65	76.1*)	76.6	185	18	145	4	M 16 (5/8")	18	3.00
80	88.9*)	89.4	200	20	160	4	M 16 (5/8")	18	3.79
100	108 114.3*)	108.5 114.8	220	20	180	8	M 16 (5/8")	18	47.20 4.03
125	133 139.7*)	133.5 140.2	250	22	210	8	M 16 (5/8")	18	5.71 5.46
150	159 168.3*)	159.5 168.8	285	22	240	8	M 20 (3/4")	23	6.72 6.57
175	191 193.7*)	192 194.7	315	24	270	8	M 20 (3/4")	23	8.60 8.45
200	216 219.1*)	217 220.1	340	24	295	8	M 20 (3/4")	23	9.50 9.31
250	267 273*)	268 274	395	26	350	12	M 20 (3/4")	23	12.5 11.9
300	318 323.9*)	319 324.9	445	26	400	12	M 20 (3/4")	23	14.4 13.8
350	355.6*) 368	356.6 369	505	28	460	18	M 20 (3/4")	23	20.6 19.0
400	406.4*) 419	407.4 420	565	32	515	16	M 24 (7/8")	27	27.9 25.9
500	508*) 521	509 522	670	38	620	20	M 24 (7/8")	27	37.9 41.1

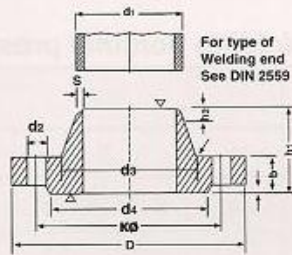


DIN 2632

Welding Neck Flanges for Nominal pressure 10

Pipe		Flange				Neck				Raised Face		Bolts		Weight of one flange 7.85 kg. /dm ³ kg	
NW	d ₁	D	b	k	h ₁	d ₃	s	-s	h ₂	d ₄	f	No.	Thread		d ₂
200	216 219.1	340	24	295	62	232 235	5.9	10	16	268	3	8		8	11.3
250	267 273	395	26	350	68	285 292	6.3	12	16	320	3				14.7
300	318 323.9	445	26	400	68	335 344	7.1	12	16	370	4	12	M 20 (3/4")	23	17.6
350	355.6 368	505	26	460	68	385	7.1	12	16	430	4				21.4
400	406.4 419	565	26	515	72	440	7.1	12	16	482	4	16			26.1
500	508 521	670	28	620	75	542	7.1	12	16	585	4		M 24 (7/8")	27	34.7
600	609.6 622	780	28	725	80	642	7.1	12	18	685	5	20	M 27 (1")	30	42.2





DIN 2633
Welding Neck Flanges for Nominal pressure 10

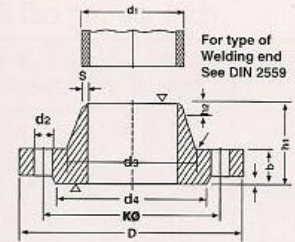
Pipe		Flange				Neck				Raisd face		Bolts			Weight of one flange 7.85 kg. /dm ³ kg																																								
NW	d ₁	D	b	k	h ₁	d ₃	s	r	h ₂	d ₄	f	No.	Thread	d ₂																																									
10	14	90	14	60	35	25	1.8	4	6	40	2	4	M 12	(1/2")	14	0.580																																							
	17.2					28										0.648																																							
15	20	95	14	65	35	30	2	4	6	45	2					4	M 12	(1/2")	14	0.648																																			
	21.3					32														0.952																																			
20	25	105	16	75	38	38	2.3	4	6	58	2									4	M 12	(1/2")	14	0.952																															
	26.9					40																		1.14																															
25	30	115	16	85	38	42	2.6	4	6	68	2													4	M 12	(1/2")	14	1.14																											
	33.7					45																						1.69																											
32	38	140	16	100	40	52	2.6	6	6	78	2																	4	M 12	(1/2")	14	1.69																							
	42.4					56																										1.86																							
40	44.5	150	16	110	42	60	2.6	6	7	88	3																					4	M 12	(1/2")	14	1.86																			
	48.3					64																														2.53																			
50	57	165	18	125	45	72	2.9	6	8	102	3																									4	M 12	(1/2")	14	2.53															
	60.3					75																																		3.06															
65	76.1	185	18	145	45	90	2.9	6	10	122	3																													4	M 12	(1/2")	14	3.06											
80	88.9	200	20	160	50	105	3.2	8	10	138	3																																	4*8	M 16	(5/8")	18	3.70							
100	108	220	20	180	52	125	3.6	8	12	158	3																																	8				M 16	(5/8")	18	4.62				
	114.3					131																																													6.30				
125	133	250	22	210	55	150	4	8	12	188	3																																								8	M 16	(5/8")	18	6.30
	139.7					156																																																	7.75
150	159	285	22	240	55	175	4.5	10	12	212	3	8	M 16	(5/8")	18																																								7.75
	168.3					184																																																	10.0
175	191	315	24	270	60	208	5.4	10	12	242	3					8	M 16	(5/8")	18																																				10.0
	193.7					210																																																	11.0
200	216	340	24	295	62	232	5.9	10	16	268	3									12	M 20	(3/4")	23																																11.0
	219.1					235																																																	15.6
250	267	405	26	355	70	285	6.3	12	16	320	3													12	M 20	(3/4")	23																												15.6
	273					292																																																	22.0
300	318	460	28	410	78	338	7.1	12	16	378	4																	16	M 24	(7/8")	27																								22.0
	323.9					344																																																	28.7
350	355.6	520	30	470	82	390	8	12	16	438	4																					16	M 24	(7/8")	27																				28.7
	368					445																																																	36.3
400	406.4	580	32	525	85	445	8	12	16	490	4																									20	M 27	(1")	30																36.3
	419					548																																																	59.3
500	508	715	34	650	90	548	8	12	16	610	4																													20	M 30	(1 1/8")	33												59.3
	521					652																																							73.4										
600	609.6	840	36	770	95	652	8.8	12	18	725	5																																	24	M 33	(1 1/4")	36	73.4							
	622					755																																										75.0							
700	711.2	910	36	840	100	755	8.8	12	18	795	5																																					24	M 33	(1 1/4")	36	75.0			
	720					855																																														99.0			
800	812.8	1025	38	950	105	855	10	12	20	900	5	28	M 36	(1 3/8")	39																																					99.0			
	820					955																																														119			
900	914.4	1125	40	1050	110	955	10	12	20	1000	5					28	M 36	(1 3/8")	39																																	119			
	920					1058																																														159			
1000	1016	1255	42	1170	120	1058	10	16	22	1115	5									28	M 39	(1 1/2")	42																													159			
	1020					1058																																														159			

* 4 bolts for ND 10 (nominal pressure) (the order than reeds welding neck flange 80/88.9 ND 10 DIN 2633)

DIN 2634

Welding Neck Flanges for Nominal pressure 25

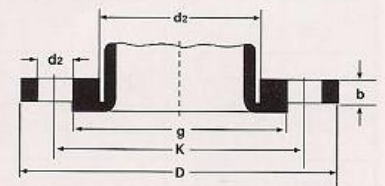
Pipe		Flange											Bolts		Weight of one flange 7.85 kg. /dm ³ kg
NW	d ₁	D	b	k	h ₁	d ₃	s	r	h ₂	h ₄	f	No.	Thread	d ₂	
175	(191) 193.7	330	28	280	75	215 218	5.6	10	15	248	3	12	M 24 (7/8")	27	13.4
200	216 219.1	360	30	310	80	240 244	6.3	10	16	278	3				17.0
250	267 273	425	32	370	88	292 298	7.1	12	18	335	3				24.4
300	318 323.9	485	34	430	92	345 352	8	12	18	395	4	16	M 27 (1")	30	31.2
350	355.6 368	555	38	490	100	398	8	12	20	450	4				M 30 (1 1/8")
400	406.4 419	620	40	550	110	452	8.8	12	20	505	4	16	M 30 (1 1/8")	33	58.7
500	508 521	730	44	660	125	558	10	12	20	615	4				M 33 (1 1/4")
600	609.6 622	845	46	770	125	660	11	12	20	720	5	20	M 36 (1 3/8")	39	101

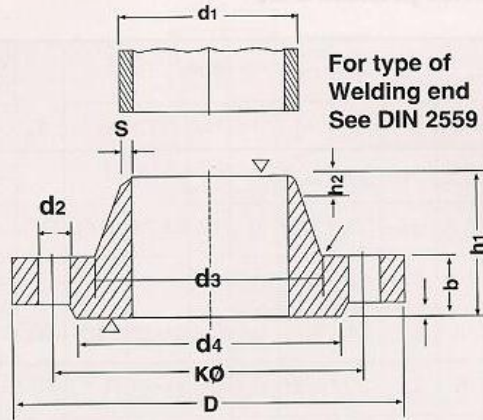


For nominal sizes 10 up to 150 see DIN 2635

Loose Flange for Flange Collar PN 10 (DIN 2642, DIN Connections)

Nom Pipe size	Flange D mm	d5 mm	b mm	r mm	k mm	Drilling Number	d2 mm	Weight kg	Collar & mm
10	90	16	16	5	60	4	15	0.23	45
15	95	23	16	5	65	4	15	0.26	50
20	105	28	16	5	75	4	15	0.30	60
25	115	33	16	5	85	4	15	0.37	70
32	140	42	16	5	100	4	18	0.54	82
40	150	50	16	5	110	4	18	0.59	92
50	165	62	18	5	125	4	18	0.80	107
65	185	81	18	5	145	4	18	0.90	127
80	200	94	20	5	160	4	18	1.28	142
100	220	113	20	5	180	8	18	1.37	162
125	250	138	22	6	210	8	18	1.378	192
150	285	164	22	6	240	8	22	2.27	218
175	315	195	24	6	270	8	22	2.90	248
200	340	222	24	7	295	8	22	3.16	273
250	395	273	26	7	350	12	22	4.22	328
300	445	324	26	7	400	12	22	4.80	378
350	505	374	26	8	460	16	22	5.85	438
400	565	426	32	8	515	16	25	8.45	490
450	615	475	32	8	565	20	25	9.45	540
500	670	530	34	8	620	20	25	11.35	595
600	780	630	36	10	725	20	30	15.30	695
700	895	730	40	10	840	24	30	21.40	810
800	1015	832	44	10	950	24	34	30.50	916





DIN 2635
Welding Neck Flanges for Nominal pressure 10

Pipe		Flange				Neck				Raised face		Bolts			Weight of one flange 7.85 kg. /dm ³ kg				
NW	d ₁	D	b	k	h ₁	d ₃	s	r	h ₂	d ₄	f	No.	Thread	d ₂					
10	14	90	16	60	35	25	1.8	4	6	40	2	4	M 12	(1/2")	14	0.661			
	17.2					28										0.746			
15	20	95	16	65	38	30	2	4	6	45	2					M 12	(1/2")	14	1.06
	21.3					32													1.29
20	25	105	18	75	40	38	2.3	4	6	58	2					M 16	(5/8")	18	1.88
	26.9					40													2.33
25	30	115	18	85	40	42	2.6	4	6	68	2					M 16	(5/8")	18	2.82
	33.7					45													3.74
32	38	140	18	100	42	52	2.6	6	6	78	2		M 20	(3/4")	23	4.75			
	42.4					56										6.52			
40	44.5	150	18	110	45	60	2.6	6	7	88	3		M 24	(7/8")	27	9.07			
	48.3					64										11.8			
50	57	165	20	125	48	72	2.9	6	8	102	3		M 27	(1")	30	18.2			
	60.3					75										21.5			
65	76.1	185	22	145	52	90	2.9	6	10	122	3		M 30	(1 1/8")	33	49.7			
	88.9					105										68.1			
80	108	200	24	160	58	128	3.2	8	12	138	3	M 33	(1 1/4")	36	68.1				
	114.3					134									96.5				
100	133	235	24	190	65	155	3.6	8	12	162	3	M 36	(1 3/8")	39	96.5				
	139.7					162									117				
125	159	270	26	220	68	182	4	8	12	188	3	M 39	(1 1/2")	42	117				
	168.3					192													
150	191	300	28	250	75	215	4.5	10	12	218	3	M 39	(1 1/2")	42					
	193.7					218													
175	216	350	32	295	82	240	5.6	10	15	260	3	M 39	(1 1/2")	42					
	219.1					244													
200	267	375	34	320	88	298	6.3	10	16	285	3	M 39	(1 1/2")	42					
	273					306													
250	318	450	38	385	105	352	7.1	12	18	345	3	M 39	(1 1/2")	42					
	323.9					362													
300	355.6	515	42	450	115	408	8	12	18	410	4	M 39	(1 1/2")	42					
	368																		
350	406.4	580	46	510	125	462	8.8	12	20	460	4	M 39	(1 1/2")	42					
	419																		
400	508	660	50	585	135	562	11	12	20	535	4	M 39	(1 1/2")	42					
	521																		

British Standard Pipe Flanges

DIMENSION OF PIPE FLANGES AS PER TABLE BS-10

Table D : For Working Steam Pressure upto 50 Ibs per sq. inch

Nominal Pipe Size	O.D. of Pipe	Dia. of Flange	Dia. of Bolt Circle	No. of Bolt	Dia. of Bolt	Thickness
1/2"	27/32"	3.3/4"	2.5/8"	4	1/2"	3/16"
3/4"	1.1/16"	4"	2.7/8"	4	1/2"	3/16"
1"	1.11/32"	4.1/2"	3.1/4"	4	1/2"	3/16"
1.1/4"	1.11/16"	4.3/4"	3.7/16"	4	1/2"	1/4"
1.1/2"	1.29/32"	5.1/4"	3.7/8"	4	1/2"	1/4"
2"	2.3/8"	6"	4.1/2"	4	5/8"	5/16"
2.1/2"	3"	6.1/2"	5"	4	5/8"	5/16"
3"	3.1/2"	7.1/4"	5.3/4"	4	5/8"	3/8"
3.1/2"	4"	8"	6.1/2"	4	5/8"	3/8"
4"	4.1/2"	8.1/2"	7"	4	5/8"	3/8"
5"	5.1/2"	10"	8.1/4"	8	5/8"	1/2"
6"	6.1/2"	11"	9.1/4"	8	5/8"	1/2"
7"	7.1/2"	12"	10.1/4"	8	5/8"	1/2"
8"	8.5/8"	13.1/4"	11.1/2"	8	5/8"	1/2"
9"	9.5/8"	14.1/2"	12.3/4"	8	5/8"	5/8"
10"	10.3/4"	16"	14"	8	3/4"	5/8"
12"	12.3/4"	18"	16"	12	3/4"	5/8"
14"	14"	20.3/4"	18.1/2"	12	7/8"	3/4"
16"	16"	22.3/4"	20.1/2"	12	7/8"	3/4"
18"	18"	25.1/4"	23"	12	7/8"	7/8"
20"	20"	27.3/4"	25.1/4"	16	7/8"	1"
24"	24"	32.1/2"	29.3/4"	16	1"	1.1/8"

Table E : For Working Steam Pressure 50 Ibs and upto 100 Ibs per sq. inch.

Nominal Pipe Size	Dia. of Flange	Dia. of Bolt Circle	No. of Bolt	Dia. of Bolt	Thickness
1/2"	3.3/4"	2.5/8"	4	1/2"	1/4"
3/4"	4"	2.7/8"	4	1/2"	1/4"
1"	4.1/2"	3.1/4"	4	1/2"	9/32"
1.1/4"	4.3/4"	3.7/16"	4	1/2"	5/16"
1.1/2"	5.1/4"	3.7/8"	4	1/2"	11/32"
2"	6"	4.1/2"	4	5/8"	3/8"
2.1/2"	6.1/2"	5"	4	5/8"	13/32"
3"	7.1/4"	5.3/4"	4	5/8"	7/16"
3.1/2"	8"	6.1/2"	8	5/8"	15/32"
4"	8.1/2"	7"	8	5/8"	1/2"
5"	10"	8.1/4"	8	5/8"	9/16"
6"	11"	9.1/4"	8	3/4"	11/16"
7"	12"	10.1/4"	8	3/4"	3/4"
8"	13.1/4"	11.1/2"	8	3/4"	3/4"
9"	14.1/2"	12.3/4"	12	3/4"	13/16"
10"	16"	14"	12	3/4"	7/8"
12"	18"	16"	12	7/8"	1"
14"	20.3/4"	18.1/2"	12	7/8"	1"
16"	22.3/4"	20.1/2"	12	7/8"	1"
18"	25.1/4"	23"	16	7/8"	1.1/8"
20"	27.3/4"	25.1/4"	16	7/8"	1.1/4"
24"	32.1/2"	29.3/4"	16	1.1/8"	1.1/2"

Table F : For Working Steam Pressure above 100 Ibs and upto 150 Ibs per sq. inch

Nominal Pipe Size	Dia. of Flange	Dia. of Bolt Circle	No. of Bolt	Dia. of Bolt	Thickness
1/2"	3.3/4"	2.5/8"	4	1/2"	3/8"
3/4"	4"	2.7/8"	4	1/2"	3/8"
1"	4.1/2"	3.7/16"	4	5/8"	3/8"
1.1/4"	5.1/4"	3.7/8"	4	5/8"	1/2"
1.1/2"	5.1/2"	4.1/2"	4	5/8"	1/2"
2"	6.1/2"	5"	4	5/8"	5/8"
2.1/2"	7.1/4"	5.3/4"	8	5/8"	5/8"
3"	8"	6.1/2"	8	5/8"	5/8"
3.1/2"	8.1/2"	7"	8	5/8"	3/4"
4"	9"	7.1/2"	8	5/8"	3/4"
5"	11"	9.1/4"	8	3/4"	7/8"
6"	12"	10.1/4"	12	3/4"	7/8"
7"	13.1/4"	11.1/2"	12	3/4"	7/8"
8"	14.1/2"	12.3/4"	12	3/4"	1"
9"	16"	14"	12	7/8"	1"
10"	17"	15"	12	7/8"	1"
12"	19.1/4"	17.1/2"	16	7/8"	1.1/8"
14"	21.3/4"	19.1/2"	16	1"	1.1/4"
16"	24"	21.3/4"	20	1"	1.1/4"
18"	26.1/2"	24"	20	1.1/8"	1.3/8"
20"	29"	26.1/2"	24	1.1/8"	1.1/2"
24"	33.1/2"	30.3/4"	24	1.1/4"	1.5/8"

Table H : For Working Steam Pressure 50 Ibs above 150 Ib and upto 250 Ibs per sq. inch

Nominal Pipe Size	Dia. of Flange	Dia. of Bolt Circle	No. of Bolt	Dia. of Bolt	Thickness
1/2"	4.1/2"	3.1/4"	4	5/8"	1/2"
3/4"	4.1/2"	3.1/4"	4	5/8"	1/2"
1"	4.3/4"	3.7/16"	4	5/8"	9/16"
1.1/4"	5.1/4"	3.7/8"	4	5/8"	11/16"
1.1/2"	5.1/2"	4.1/8"	4	5/8"	11/16"
2"	6.1/2"	5"	4	5/8"	3/4"
2.1/2"	7.1/4"	5.3/4"	8	5/8"	3/4"
3"	8"	6.1/2"	8	5/8"	7/8"
3.1/2"	8.1/2"	7"	8	5/8"	7/8"
4"	9"	7.1/2"	8	5/8"	1"
5"	11"	9.1/4"	8	3/4"	1.1/8"
6"	12"	10.1/4"	12	3/4"	1.1/8"
7"	13.1/4"	11.1/2"	12	3/4"	1.1/4"
8"	14.1/2"	12.3/4"	12	3/4"	1.1/4"
9"	16"	14"	12	7/8"	1.3/8"
10"	17"	15"	12	7/8"	1.3/8"
12"	19.1/4"	17.1/4"	16	7/8"	1.1/2"
14"	21.3/4"	19.1/2"	16	1"	1.5/8"
16"	24"	21.3/4"	20	1"	1.3/4"
18"	26.1/2"	24"	20	1.1/8"	1.7/8"
20"	29"	26.1/2"	24	1.1/8"	2"
24"	33.1/2"	30.3/4"	24	1.1/4"	2.1/4"